

Ashtavinayak Yatra - 2N/3D

Visit: Pune 2N | Ashtavinayak temples enroute and around Pune

Sightseeing: Ashtavinayaka temple visits



Itinerary:

Day 01: Mumbai – Pune: Visit Varad Vinayak, Ballaleshvara & Maha Ganpati

You will be picked up from your location in Mumbai (within city limits) early morning as you begin your Ashtavinayak Yatra. You will first visit Mahad (161 kms) which has a personality of its own due to its mythological, historical, social and cultural importance. Here, Ganesh as **Varad Vinayak** fulfils all desires and grants all boons. The temple premises are on one side of a beautiful pond. The idol of this temple faces the east and has his trunk turned to the left. There is an oil lamp, Ananddeep in this shrine which is said to be burning continuously since 1892. Now continue your journey to Pali (72kms) situated in the Sudhagad taluka in Raigad district. Here you visit the temple of **Ballaleshvara**, the only Ganesha who is famous by the name of his devotee and who is dressed up as a Brahmin. Drive onward to Ranjangaon (154 kms). The **Maha Ganpati** here is the most powerful representation of Lord Ganesh, depicted as having eight, ten or twelve arms. It is after invoking this form of Ganesha that Shiva vanquished the demon Tripurasur and so he is also known as Tripurarivade MahaGanpati. You will be provided stopovers enroute for Breakfast and Lunch (at own cost). After Ranjangaon, you proceed to Pune city and check in to your hotel late evening. Overnight at hotel in Pune.



Day 02: Pune: Visit: Chintamani, Sidhivinayak & Moreshwar Temples

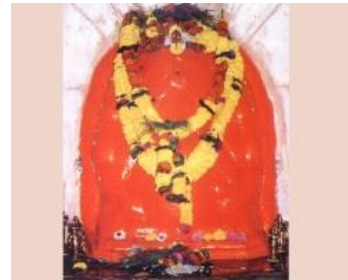
Today after breakfast you leave for Darshan of Ganeshas, starting from the temple dedicated to **Chintamani Vinayak** in Theyoor (26kms) in the Haveli Taluka along the river Mulamutha.



Chintamani is believed to bring peace of mind and remove all perplexities of the mind. Next on the Yatra is Siddhatek, a remote little village along the river Bhima in the Ahmednagar district. The **Siddhivinayak** at Siddhatek (93 kms) is considered an especially powerful deity and it is believed that Lord Vishnu acquired Siddhi here in Siddhatek mountain. Later you leave for the **Moreshwar temple** along the Karha river in Morgaon village (76kms) having derived its name from Mor meaning peacock which were abundant at one time. The temple looks like a tiny fort from a distance. You will be provided stopovers enroute for Lunch (at own cost). Return to Pune late evening and overnight Stay in Pune. (B)

Day 03: Pune: Vighneshwar & Girijatmaj Vinayak Temple

Today after breakfast you check out of the hotel and proceed to Ozhar on the banks of the Kukdeswar river. Ozhar, is the abode Lord **Vighneshwara** - remover of all obstacles, which he did by vanquishing the demon Vighnasura .Onward to Lenyadri to the North of Pune, along the Kukdi river. Here **Girijatmaj Vinayak** refers to Ganesh as the son of Parvati. Girija is another name for Parvati and Atamaj means son. This is the only temple of the



of

Ashtavinayak which is on a mountain and is set in a Buddhist cave-temple . You will be provided stopovers for lunch (at own cost) and then drive back to Mumbai after the divine Yatra. (B)

Package Includes:

- Accommodation for 2 nights in Pune with breakfast,
- Transfers Ex-Mumbai in private AC vehicle,
- Visit to the 8 temples on the Ashtavinayak circuit.

Package Excludes:

- Meals and transfers other than what is mentioned in the itinerary.
- Cost of transportation towards any increase in distance travelled beyond 750 kms for the entire Yatra.

Notes:

Ashtavinayaka literally means "Eight Ganeshas" in Sanskrit- Ganesha is the Hindu deity of obstacles, unity, prosperity and learning. The term refers to eight Ganeshas. Ashtavinayaka yatra refers to a pilgrimage to the eight Hindu temples in Maharashtra that house eight distinct idols of Ganesha, in a pre-ascertained sequence.

AT BELOW MENTIONED HOTEL OR SIMILAR

Location/Category	Premium	Deluxe	Standard
Pune	Ibis/Vits	Ginger	Hotel Sapna Executive

PRICE PER PERSON –EXCL ST OF 9.00%

ROOMING BASIS	Premium	Deluxe	Standard
ADL IN TWIN	19250	16500	14190

PACKAGE PRICE:VALIDITY UPTO 30 SEP'17 BEARING PEAK AND BLOCK OUT PERIODS

IMPORTANT NOTES:

- ✓ Package price refers to services mentioned under the package inclusions section in the proposal
- ✓ We urge you to use our services for Flight tickets / Rail tickets.
- ✓ Booking Conditions, Amendment and Cancellation charges are applicable as mentioned on the website under terms and conditions and on the booking form of *WORLDTRAVEL STUDIO HNV PVT LTD.*
- ✓ Package price will be subject to revision if the travel date falls during high season or during non-published conferences/special event dates.
- ✓ If any of the mentioned hotels/services are not available, alternate hotels/services may be offered with or without a difference in cost.
- ✓ Request for early hotel check in or late checkout due to flight/rail timings, will be subject to the discretion of the hotel at extra charges.
- ✓ All payment to be made by Cheque/Demand Draft/Direct bank transfer in favour of WorldTravel Studio HNV Pvt.Ltd.

5 MONEY SAVING TIPS:

- As you are aware, airlines offer dynamic fares, it is advantageous to book flight tickets as early as possible.
- Also, booking the flight early helps you get the desired flight schedules.
- Likelihood of getting the desired hotel and room category is higher if you book early, thereby saving money.
- We highly recommend to opt for accommodation suggested by us as per the price points.

- Precise information with regard to date of travel, duration, number of tour participants, accommodation category and sightseeing helps to get appropriate quotation in quickest time.